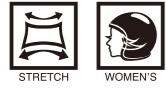


RSU609

WARM RIDE HOODED SHIRT



• High loft thermal fabric construction.
 ■ SIZE: M • L • XL • XXL • WM • WL



GRAY/WHITE



BLACK/SKY

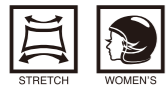


BLACK/RED



RSU610

WARM RIDE PANTS



• High loft thermal fabric construction.
 ■ SIZE: M • L • XL • XXL • WM • WL



GRAY/WHITE



BLACK/RED

RSU608

WARM RIDE ZIP SHIRT



• High loft thermal fabric construction.
 ■ SIZE: M • L • XL • XXL • WM • WL



STRIPE WHITE



STRIPE RED



RACER BLUE



STRIPE NEON



RACER RED



RACER WHITE

RSU611

WARM RIDE BASIC SHIRT

RSU612

WARM RIDE BASIC PANTS



• High loft thermal fabric construction.
 ■ SIZE: M • L • XL • XXL • WM



TECTONIC BLACK



RACER BLACK



TECTONIC BLACK



RSX150

WINDSTOP NECK WARMER



• Ventilation holes in windstop layer for breathing.

■ SIZE: ONE SIZE



RSX149

WINDSTOP FACE MASK



• Ventilation holes in windstop layer for breathing.

■ SIZE: ONE SIZE



RSX160

BOA NECK WARMER



• Triple layered with elastic windstop outer material and thermal insulation.
• Boa fleece construction on the inside for excellent touch.
• Fluffy material fills the gap around the neck.

■ SIZE: ONE SIZE



RSX155

WINDSTOP 3D FULLFACE MASK



• Anatomical 3D pattern.
• Floating mesh panel around mouth for breathing.
• Easy adjuster on back.

■ SIZE: ONE SIZE



RSX154

WINDSTOP 3D NECK WARMER



• Anatomical 3D pattern.
• Floating mesh panel around mouth for breathing.
• Easy adjuster on back.

■ SIZE: ONE SIZE



RSX145

FLEECE FACE MASK

• Elastic strap on back neck for better fit.

■ SIZE: ONE SIZE



RSU287

WIND BREAKER INNER PARKA

- Soft touch wind stop fabric construction.
- SIZE: S • M • L • XL • XXL • 3 XL • 4 XL



Storable in chest pocket
 ● storage size(cm): 18×13×5
 ● weight : 160g



BLACK

CAMOUFLAGE

RSU264

WP INNER JACKET

- Waterproof fabric construction.
- Designed to wear under jacket to control temperature and add waterproofness.
- SIZE: S • M • L • XL • XXL • 3 XL • 4 XL



Storage pouch included.
 ● storage size(cm): 20×12×5
 ● weight : 200g



BLACK/YELLOW

BLACK/RED

RSU232

WIND STOP INNER JACKET

- Designed to wear under jacket to control temperature.
- SIZE: S • M • L • XL • XXL • 3 XL • 4 XL



Storage pouch included.
 ● storage size(cm): 17×9×2
 ● weight : 130g



BLACK

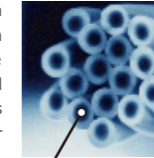
RST124

THERMOTRON[®] INNER GLOVE



- Thermotron reflects the far infrared rays from body to keep warmth.
- Thin and elastic material construction.
- SIZE: S • M • L • XL

Thermotron is a heat-storing heat-retentive material with a functional ceramic micro-particle woven into the core of each fiber. These micro-particles absorb sunlight and convert the absorbed light energy into heat. Since the heat generated by this light-absorption and heat-conversion function creates comfortable warmth, it is optimal for use during colder seasons.



Zirconium carbide



BLACK

RSC115

COOLRIDE HELMET INNER CAP



MICRO QUBIC[®]

- Keeps your helmet liner clean.
- SIZE: ONE SIZE (Head Size: 55~64cm) (2pcs/1pack)



BLACK

RSI209

TAICHI BOOTS SOCKS (LONG)

- Extra thick in instep, ankle bone and shin for padding.
- Thinner fabric in arch, ankle and calf for breathability and mobility.
- Rib on front of ankle to reduce bulkiness.
- Arch support to reduce fatigue.
- Deodorant by chitosan treated fiber.
- SIZE: ONE SIZE (25.0 ~ 28.0cm)



NAVY

BLACK

RED