

Must need safety gear for protecting chest and life, CHEST PROTECTOR

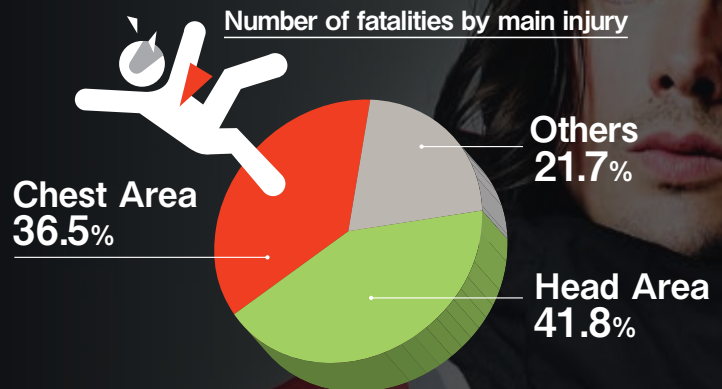


Motorcycle accidents. No one would want to be involved in this. The biggest cause of death in a motorcycle accident is damage in the head(41.8%). Second is damage in the chest area(36.5%).

In case of chest damage, most people hit other vehicle, structures, fuel tank or handle area of own motorcycle. By hitting the chest area, important organs like lung or heart gets damaged and causes death in the worst case.

"Is it completely safe if you wear a chest protector?" The answer is "NO" but we can say it is very effective to reduce the risk of death caused by a traffic accident.

To protect irreplaceable life, we want all riders to notice that chest protector is one of the important safety gear as same as helmets.



The Fusions of Passion and Technology TECCELL CHEST PROTECTOR The hope of developers

TECCELL CHEST PROTECTOR was made by the fusion of people with Passion who hope for safety of riders and people with advanced Technology.

Shintaro Kurisu, the chief designer of RS TAICHI INC. started the development with a strong sense of mission. Kurisu says, "One of my good friend who gave me opportunity of riding died in a motorcycle accident suffering serious injury in the chest. It was around the time when necessity of chest protector drew people's attention. I was already working for RS TAICHI so I deeply regretted that we were not able to spread how important it is to wear a chest protector by that time and swore to make a chest protector that really protects the rider and spread it to the world." Chest protectors those days were heavy and thick and still had problems to be solved. I was thinking how we can meet the requirements such as lightness, stiffness and impact absorption in a high level that riders will satisfy. That is when I met TECCELL.

TECCELL, made by Gifu Plastic Industry Co., is a honey comb core material that has very high stiffness and lightness. TECCELL has already achieved good results in various industries such as automotive, train and sports. TECCELL has high shock absorption and could be 3D processed. Its characteristic was ideal for chest protector. "Characteristic of TECCELL completely matched the requirements of the chest protector" Mr. Ito of TECCELL division of Gifu Plastic Industry Co. says.

Mr. Matsushima of Development and Technical division of Tokyo Shimazu Co. took charge of molding and processing of TECCELL. Mr. Matsushima says "TECCELL requires more sensitive heat control than other materials. We adjusted the heating

temperature and heating time over and over again to maintain the quality of the surface and to make the TECCELL force against the mold tightly." He was very particular with examining molding specification, preparing mold and processing tool and molding process to make a "High Quality Product".

Mr. Ito says "I really hope that this products will help increase the number of riders who wears chest protectors and protect more riders. Mr. Matsushima says "I'm really happy to play part of the development of a product that protects riders life.

"By everyone's cooperation, we were able to develop TECCELL Chest Protector which is 6 times more stiffer than the requirement of prEN1621-3:2015 Full Chest Type B Level 2 standard. I am confident that we have developed a product in a different level from the existing products." Shintaro Kurisu says. Continues as "But this is not a goal."

Developments of products to protect riders still continues and never end. All for the riders...



Gifu Plastic Industry Co.
Hiroataka Ito



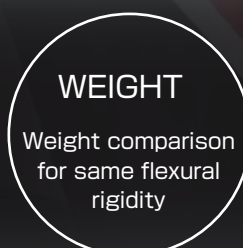
Tokyo Shimazu Co.
Atsushi Matsushima



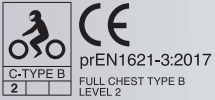
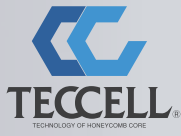
RS TAICHI INC.
Shintaro Kurisu



TECCELL is a lightweight honeycomb core material. Compared to any other structures, TECCELL honeycomb panels are characterized by an excellent high specific strength and rigidity.



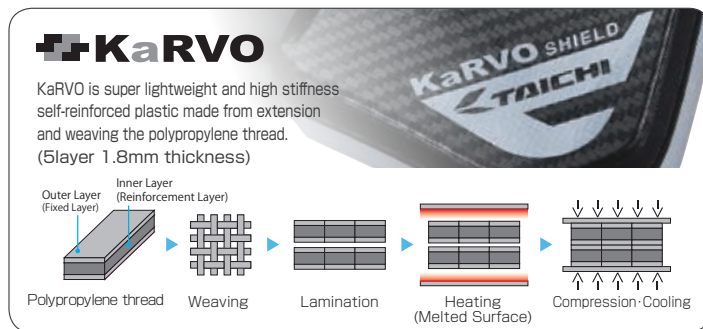
Material	Steel	TECCELL
Thickness	3.6mm	29.3mm
Weight	28.1kg/m ²	3.9kg/m ²
		86% Lighter



TRV069 CROSSLAY CHEST PROTECTOR (WITH BUTTON)

- 3 Layer construction
- WEIGHT: 270g
- prEN1621-3 level2 approved (Full-CHEST C)
- The highest rigidity prEN1621-3 level2 approved full chest type chest protector in the market. (According to our research)

■ SIZE : H200×W260mm
 ■ MATERIALS : Polypropylene



TRV070 CROSSLAY CHEST PROTECTOR (WITH BELT)

- 3 Layer construction
- WEIGHT: 270g (Not including fitting belt)
- prEN1621-3 level2 approved (Full-CHEST C)
- The highest rigidity prEN1621-3 level2 approved full chest type chest protector in the market. (According to our research)

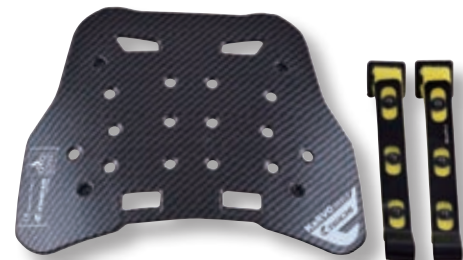
■ SIZE : H200×W260mm
 ■ MATERIALS : Polypropylene

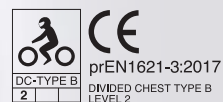


TRV073 KaRVO SHIELD (OPTION PARTS)

- Optional parts for TRV063 (MEN'S) / TRV064 (MEN'S) to increase penetration resistance.
- Not able to use individually.

■ MATERIALS : Polypropylene





TRV067 TECCELL SEPARATE CHEST PROTECTOR (WITH BUTTON)

- 2 layer mating system
- WEIGHT: 250g
- prEN1621-3 level2 approved (First in Asia)
- The highest rigidity prEN1621-3 level2 approved separate type chest protector in the market. (According to our research)

■ SIZE : H220×W270mm
 ■ MATERIALS : Polypropylene



TRV068 TECCELL SEPARATE CHEST PROTECTOR (WITH BELT)

- 2 layer mating system
- WEIGHT: 250g (Not including fitting belt)
- prEN1621-3 level2 approved (First in Asia)
- The highest rigidity prEN1621-3 level2 approved separate type chest protector in the market. (According to our research)

■ SIZE : H220×W270mm
 ■ MATERIALS : Polypropylene



Easy to separate by opening from top of protector. It will not unexpectedly open while wearing.





TRV063 TECCELL CHEST PROTECTOR (WITH BUTTON)

Lightest prEN1621-3:2015 Full Chest Type B Level 2 approved chest protector in the market.
New era chest protector with "Rigidity", "High Impact Absorption" and "Lightness"

- SIZE : MEN'S/H200×W260×T17mm (8.5mm×2 layer)
WOMEN'S/H220×W250×T17mm (8.5mm×2 layer)
- MATERIALS: Polypropylene
- WEIGHT: MEN'S/200g WOMEN'S/230g



MEN'S
BLACK/WHITE

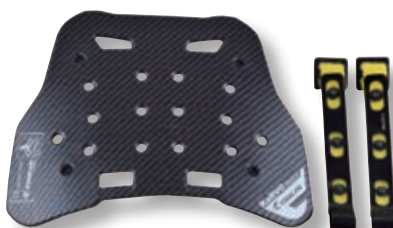


WOMEN'S
BLACK/WHITE

Upgrade for the impact absorption performance



TRV063
TECCELL CHEST PROTECTOR

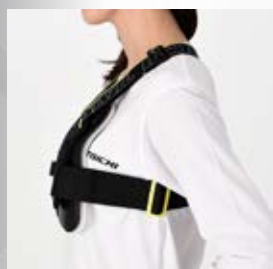


TRV073 KaRVO SHIELD
Please refer P.55



TRV069
CROSSLAY CHEST PROTECTOR

Can be attached to the chest protector without choosing the riding jacket.



TRV064 TECCELL CHEST PROTECTOR (WITH BELT)

■SIZE : MEN'S·WOMEN'S
■MATERIALS: Polypropylene



MEN'S
BLACK/YELLOW



WOMEN'S
BLACK/YELLOW



TRV065 FITTING BELT FOR CPS

Fitting belt for chest protector with CPS(Chest Protector System). Elastic and adjustable shoulder belt and adjustable side belt for secure fit.

■SIZE : ONE SIZE
※79cm~113cm(chest)
■MATERIALS: Polyethylene (Belt)



Easy One-touch mounted CPS compatible item.



『Chest Protector System』

Recently, concern about safety is increasing in the motorcycle industry. RS TAICHI has released several jackets equipped with chest protector and optional chest protector can be added to most of the jackets. We have made a common chest protector integrating system, CPS in 2009. We will continue releasing new chest protectors to provide wide variety of products to meet the rider's demands.

『JMCA Recommended Chest Protector System』 started in August, 2016.

Japan Motorcycle Accessories Association(JMCA) started 『JMCA Recommended Chest Protector System』 in August, 2016 together with the protector manufacture in the association. Sticker are added to the package of the recommended product which is highly protective and has passed the CE standard to make them noticeable. JMCA is aiming to increase the use of chest protector by this system. Currently there are 2 levels of JMCA's recommended products. ★ is equivalent to CE level1 and ★★ is equivalent to CE level2. More stars mean higher performance.



TRV033 FLEX CHEST PROTECTOR (BUTTON) TRV034 FLEX CHEST PROTECTOR (WITH BELT)



BLACK



Fitting belt for TRV034

- 8mm honeycomb to absorb impact.
- Chest protector attached base (CPS).
- Triple layer (PP+Honeycomb+EVA foam) construction.

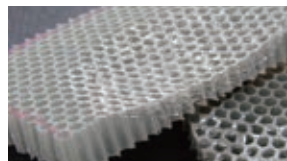
■ SIZE: ONE SIZE



TRV033



TRV034



8mm honeycomb to absorb impact.

TRV037 SEPARATE HONEYCOMB CHEST PROTECTOR



BLACK



- CPS(Chest Protector System).
- Six layer (PP+Honey Comb+PP+Honey Comb+PP+Polyethylene foam) construction.

■ SIZE: ONE SIZE



Honey comb insert to absorb impact.



TRV059 STEALTH CE KNEE GUARD

- Low profile design to wear under casual clothing.
- CE approved armor.
- Elastic strap for secure fit.
- Mesh fabric on sweating area.

■ SIZE: M (34 ~ 40cm/21cm) L (36 ~ 42cm/21cm)
※ Around knee/Protector length

CE



BLACK/YELLOW

TRV060 STEALTH CE ELBOW GUARD

- Low profile design to wear under casual clothing.
- CE approved armor.
- Mesh fabric on sweating area.

■ SIZE: ONE SIZE (23 ~ 29cm)
※ Around elbow

CE



BLACK/YELLOW

TRV045 STEALTH CE KNEE GUARD [HARD]

- Low profile design to wear under casual clothing.
- Light weight honeycomb core hard shell CE armor.
- Elastic strap for secure fit.
- Mesh fabric on sweating area.

■ SIZE: M (34 ~ 40cm/26cm) L (36 ~ 42cm/26cm)
※ Around knee/Protector length

CE



BLACK/YELLOW

TRV046 STEALTH CE ELBOW GUARD [HARD]

- Low profile design to wear under casual clothing.
- Light weight honeycomb core hard shell CE armor.
- Mesh fabric on sweating area.

■ SIZE: ONE SIZE (23 ~ 29cm)
※ Around elbow

CE



BLACK/YELLOW

TRV077 EXSORB CE2 PROTECTOR [For ELBOW/KNEE]

TRV078 EXSORB CE2 PROTECTOR [For SHOULDER]



BLACK

- High performance impact absorption
- Air-through.
- 13mm thickness.

■ SIZE: ONE SIZE

- Light weight.
- For elbow and knee (TRV077).
- Anatomical shape for good fit.
- CE Level 2 approved (EN1621-1:2012).



Elbow/Knee



Shoulder

TRV075 HELINX CE PROTECTOR [For ELBOW/KNEE]

TRV076 HELINX CE PROTECTOR [For SHOULDER]

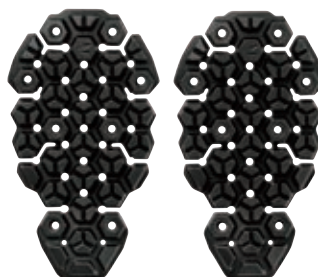


BLACK

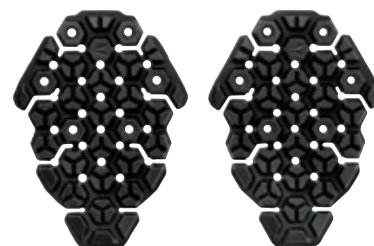
- High impact absorption.
- Ventilation.
- 10mm thickness.
- Light weight.

■ SIZE: ONE SIZE

- For elbow and knee (TRV075).
- Hexagonal shape for flexibility.
- CE Level 1 approved (EN1621-1:2012).



Elbow/Knee



Shoulder

PROTECTION UP GRADE (JACKET / PANTS)

You can upgrade the protectors to increase the protection level.(option)

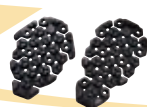
Protector pockets are common size and shape and you can replace the protectors from the inside.



Upgrade by replacing protectors.



Light Weight
Perforated Protector
※ Not sold as option.



HELINX CE
PROTECTOR



TAICHI CE
PROTECTOR



EXSORB CE2
PROTECTOR



Standard

PROTECTION

High

NXV311 CE FLEX BACK PROTECTOR



- EN1621-1 Level 2 approved.
- Open cell technology for superior air flow to keep riders cool.
- Removable EVA foam on the inside for added performance
- Multi position waist strap system
- Extra side adjustment straps give a more secure fit against the spine.
- Quick release soft shoulder straps.
- Kidney pads for added performance.

■SIZE:M·L·YOUTH/LADIES

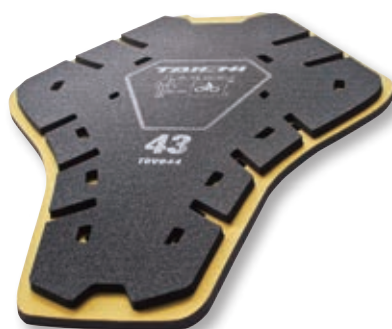
※M:160~175cm

L:170~185cm

Y/L:140~155cm



TRV044 TAICHI CE BACK PROTECTOR



- CE Level 2 approved.
- Double layer 13mm thickness PVC construction.
- Option to upgrade standard back padding to higher protection back protector.

■SIZE:38 (WS·WM·WL) ·40 (S·M·L) ·
43 (XL·XXL) ·48 (3XL·4XL·5XL)



Double layer structure follows the body movement.

TRV057 TAICHI CE PROTECTOR (For ELBOW/KNEE)

- Design for RS TAICHI jacket and pants.(elbow or knee)
- CE approved.

■SIZE:ONE SIZE



TRV058 TAICHI CE PROTECTOR (For SHOULDER)

- Design for RS TAICHI jacket.(shoulder)
- CE approved.

■SIZE:ONE SIZE

