



TAICHI

SAFETY WITH STYLE

TAICHI RIDING GEAR COLLECTION
2018 SPRING / SUMMER

Safety comes first. Comfort is essential.
But that isn't good enough.
Your gear has to reflect and enhance
your individual style, too.



CONCEPT

Safety, Comfort, Style.

There are many factors that makes riding gear valuable.

Choose your style.

Get fitted with protective gears.

The latest collection of riding gear, superior in engineering and design, beckons you to get out on the road with your fellow riders.

Safety, Comfort, Style.

Pursuit safety and comfort



The safety comes first.

The most important factor of motorcycle riding gear is safety. RS TAICHI was first among the Japanese motorcycle riding gear manufacture that has adopted European CE approved protectors to reduce the damage of body in an accident. We have been appealing how important it is to protect the chest because the second biggest cause of death in motorcycle accident is the injury in the chest.



With the riders' vision.

Since 1975, our intention for product development of motorcycle riding gears has not changed. We always have "You" in our mind and develop products with rider's vision to produce products with high safety and comfort. Product development never ends.



We produce what is really wanted.

Taichi Yoshimura, the founder was a former factory motocross rider. Playing an active part in the professional racing made his product development philosophy to be "No compromise". Our strong spirit to "Produce the products riders want." is the power to make high quality products with originality.



For the future of riding motorcycle, to share the dream with riders.

RS TAICHI is not a manufacture that only makes products nor only sells products. Our role is to share the Dreams with riders and to create Sportive Culture through motorcycling.

RS TAICHI HISTORY

For the future of riding motorcycle, to sharing the dream with riders.



1975

TAICHI Yoshimura, a professional Motocross rider, established Rider Spot TAICHI, in Osaka. A genuine pro motorcycle gear shop with Yellow T-Mark logo. RS stands for Rider's Spot.



'76

The first original manufactured products were Gear Bags.



'83

The current head Taichi store was built in Nakagaito, Daito, Osaka.

'84

Developed original riding shoes, RST301 with Japanese sports shoes manufacture, ASICS.



Built Rider Park (Tatsuma) as a genuine off-road track.

'88

World Champion 500CC rider Kevin Schwantz contracted with RS TAICHI.



'92



Alessandro Gramini won the 125cc World Championship title wearing NIXE racing suits by RS Taichi.

'93

RS Taichi expands to cruiser market with new concept brand, "OPTIMA".



'98

Released original new touring accessories series "LD Equipment" series for touring riders



'96

Original filter oil & cleanser "RST-1" which adopted by Honda factory team.

2005-'06

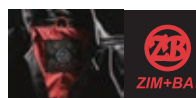
Keiichi Kitagawa won FIM Endurance World Championship title in RS Taichi rebranded race suits.



'06-'07

Reached out to International market at Intermoto in Koln, Germany, Milano in Italy and Indianapolis, USA.

'06



Released original brand ZIM + BA. Exclusive high end fashion for mature riders.



1st presentation at the biggest motorcycle show in the world "INTERMOT" in Koln, Germany

'08

New logistic center opened in Higashi Osaka, Japan.



Released T-RAPS airbag protection system built into the neck hump on race suits.



'10



RSB260 EL Blade Holster bag won the Good Design Award.



Launched New original brand logo mark "L-Mark"



Kosuke Akiyoshi won the champion of All Japan Road Race Championship (SBK1000 class).

'09

Team Yoshimura Suzuki / Nobuatsu Aoki won Suzuka 8 Hour endurance race.



'13



Azlan Shah Kamaruzaman won Petronas FIM Asia Road Racing Championship SuperSport 600cc title.

'14

Josh Hayes won AMA Road Racing Championship Superbike title.



Contracted with Hafiz Syahrin - Petronas Raceline.



New "TIPS" protectors debuted at Suzuka 8-Hours on suits for the Yoshimura Legends Team Kevin Schwanz, Nobu Aoki, and Satoshi Tsuchimoto. Now utilized on all Taichi production race suits.



'15



Award winning CE Level 2 TECCELL Chest Protector released.

'15-'16



Taichi named official supplier of race gear for Asia Dream Cup.

'16



Apiwat Wongthananon won FIM Asia Road Racing Championship 250cc class title.

'17



Supplied official team Wear to TEAM SUZUKI ECSTAR.



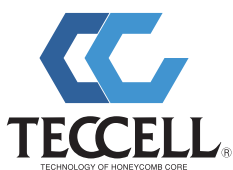
RS TAICHI riders dominated podium at DAYTONA200.

Developed TECH-AIR airbag system equipped Racing leather suits.



Developed separate type and surface reinforced type TECCELL Chest Protector.

PROTECTOR SYSTEM



LIGHTTEST

prEN1621-3:2015 Full Chest Type B Level 2 approved chest protector in the market.



"CHEST PROTECTOR" A MUST NEED TO PROTECT YOUR LIFE

Helmet and protectors are a must need to enjoy safe riding. No. 1 reason of death in motorcycle accident was injury in the head and No. 2 was injury in the chest. As you can see from this result, wearing chest protector is as important as wearing a helmet to protect your life. Despite of this result, riders wearing chest protector are only few percent of riders wearing helmet. We will continue development of chest protectors to deliver high level safety and comfortable chest protectors to riders.



TAICHI CE PROTECTOR CONTINUES EVOLUTION

TAICHI CE Protector has evolved to the next level. The new anatomical shape allows the protector to fit the body and follows the body movement. Adopting a new material allowed to make the protector thinner yet maintaining the impact absorption area required by CE. RS TAICHI's challenge will never end.







NOW THE SEASON HAS COME

Hop on the bike and go out for a ride.

Enjoy The Latest Collection Of Spring / Summer Riding
Gear With Style And Comfort.





Men's

RSJ313
RACER MESH JACKET

P.15



P.11 RSJ310
DRYMASTER ALPHA JACKET



P.13 RSJ318
ARMED HIGH PROTECTION MESH JACKET



P.33 RSJ307
AIR PARKA



P.17 RSJ320
CROSSOVER MESH JACKET



P.21 RSJ315
INGRAM MESH JACKET



P.25 RSJ322
IGNITION MESH JACKET



P.31 RSJ321
WR PARKA



P.35 RSJ316
AIR TRACK PARKA

Women's

RSJ320
CROSSOVER MESH JACKET

P.17



P.11 RSJ310
DRYMASTER ALPHA JACKET



P.31 RSJ321
WR PARKA



P.19 RSJ319
VIENTO AIR JACKET



P.33 RSJ307
AIR PARKA



P.23 RSJ317
CREW MESH JACKET



P.47 RSU295
COOL RIDE ZIP INNER JACKET



P.57 TRV063
TECCELL CHEST PROTECTOR
(WITH BUTTON)



P.40 RSY247
QUICK DRY CARGO PANTS



INNOVATIVE TECHNOLOGY

RIDING JACKET

MATERIAL & FUNCTION



DRYMASTER

This RS TAICHI original material is high functional material with waterproof by laminated special polyurethane, and breathable by special molecule structure



CE

Protection and protector that are CE certificated have met the strict performance standard and requirement of the European union.



RS TAICHI original material made for motorcycle gear. T-DRY will absorb moisture (more than two times faster compared to cotton) and dry quickly to keep comfort inside the gear.



CPS CHEST PROTECTOR BASE SYSTEM

Common system to add optional chest protector to the jacket.

Teflon HT

High-Tech Fabric Protector

Teflon® HT

This is care products protect virtually all kind of fabric from water, dirt and stains without affecting color, and it can gives long-time maintain conditions.

THERMIC^oLight

RS TAICHI original heat insulation function. Combination of light and warm high loft insulation and soft fabric allows comfort and high heat retaining. Keeps you warm and comfortable inside the riding gear.

WATERPROOF/BREATHABLE

In addition to the waterproofness, breathability keeps the inside dry by passing through the water vapor.

WATERPROOF

Waterproof to keep you dry in wet weather.

REFLECTOR

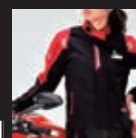
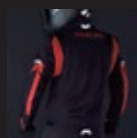
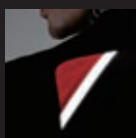
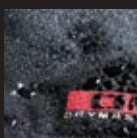
Increase visibility in night time by reflecting the light from other vehicle.

360° REFLECTOR

Reflector on shoulder, chest, back and elbow to increase visibility from every direction.

WOMEN'S SIZE

Women's size in lineup. Women's cut to fit women's body.





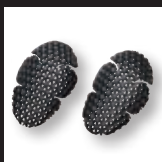
EN1621-1: 2012



EN1621-1: 2012



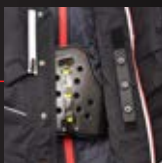
Protectors
on Shoulders
and elbows.



Please refer P. 61 for protectors
on shoulders and elbows.



Common system
to add optional
chest protector
to the jacket.



Please refer P. 54 for optional chest protectors.

INNER EQUIPPED PROTECTOR

